



12H800

Illustrated Parts List

Model Series

12H800

TYPE NUMBERS
0652 through 6699.

TABLE OF CONTENTS

Alternator	7
Air Cleaner	4
Blower Housing/Shrouds	6
Camshaft	2
Carburetor	3
Controls	5
Crankshaft	2
Cylinder	2
Electric Starter	7
Electrical	7
Engine Sump	2
Exhaust System	4
Flywheel	7
Flywheel Brake	7
Fuel Supply	5
Governor Spring	5
Ignition	7
Kits/Gaskets	2 & 3
Lubrication	2
Piston Group	2
Rewind Starter	7
Valves	2



PRINTED IN U.S.A.

COPYRIGHT by BRIGGS & STRATTON CORPORATION
All rights reserved. No part of this material may be reproduced or transmitted, in any form or by any means, electronic or mechanical, including photocopying, recording or by any information storage and retrieval system, without permission in writing from Briggs & Stratton Corporation.

12H800

1319 WARNING LABEL



REQUIRED when replacing parts with warning labels affixed.

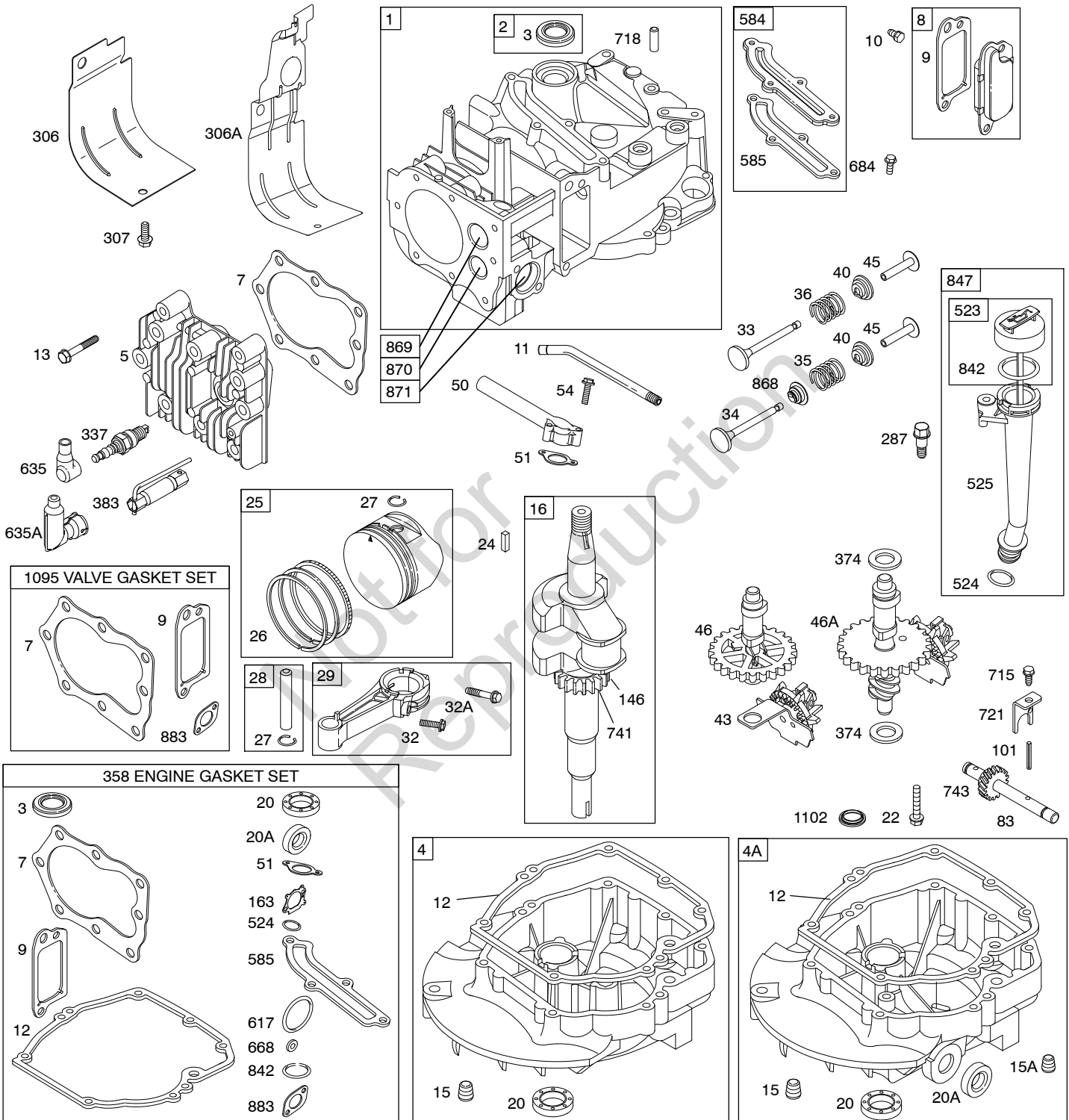
1058 OPERATOR'S MANUAL



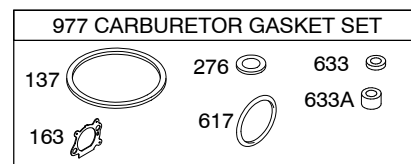
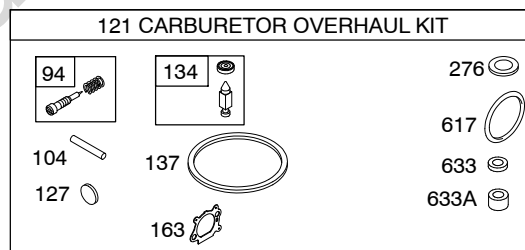
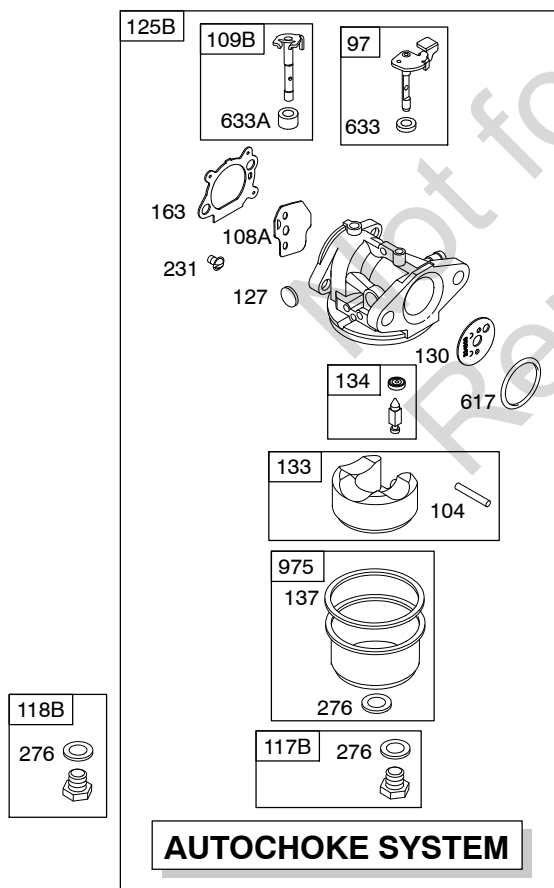
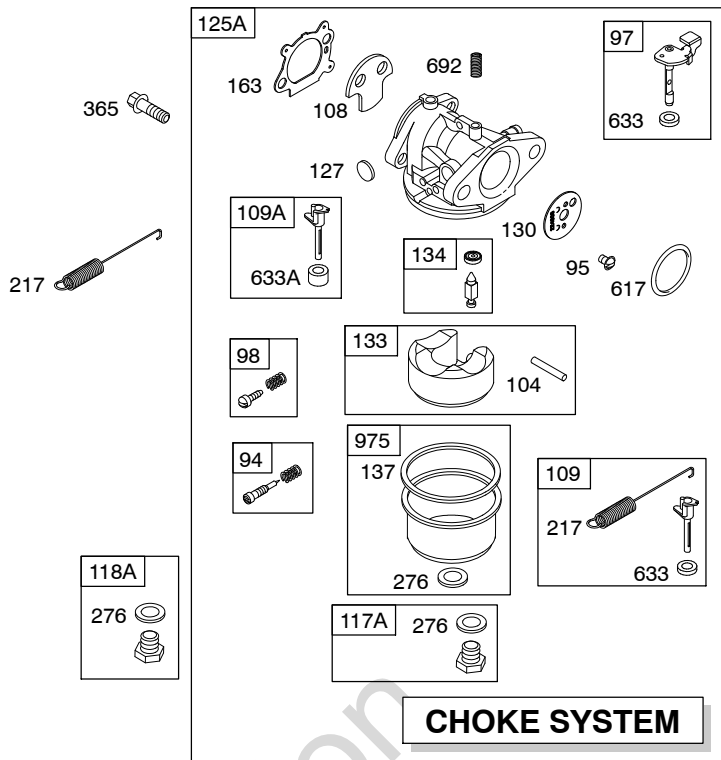
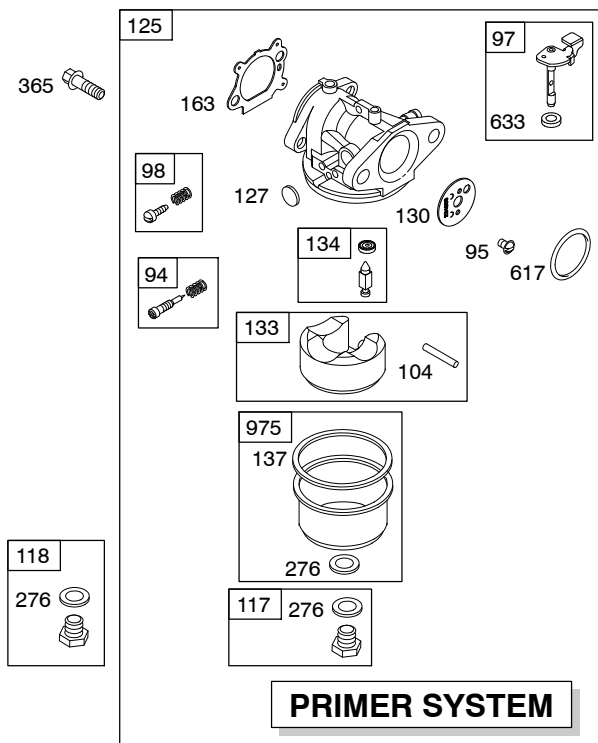
1330 REPAIR MANUAL



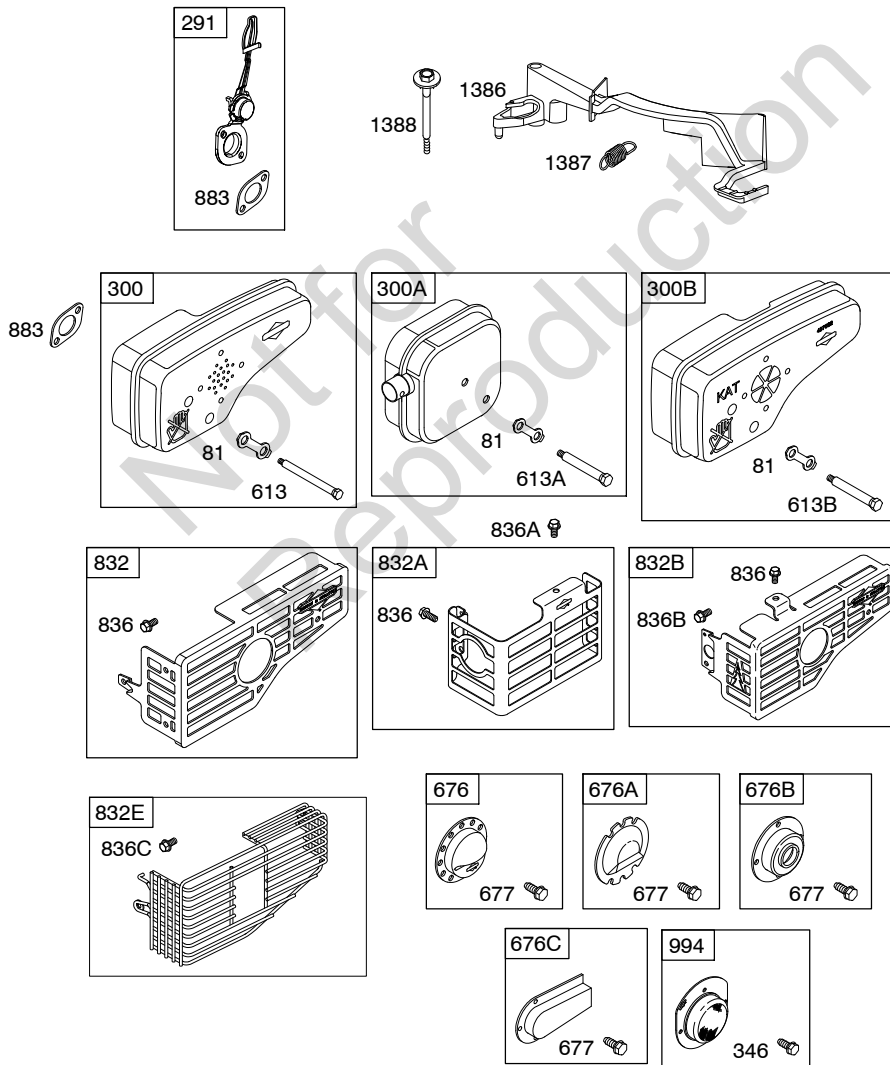
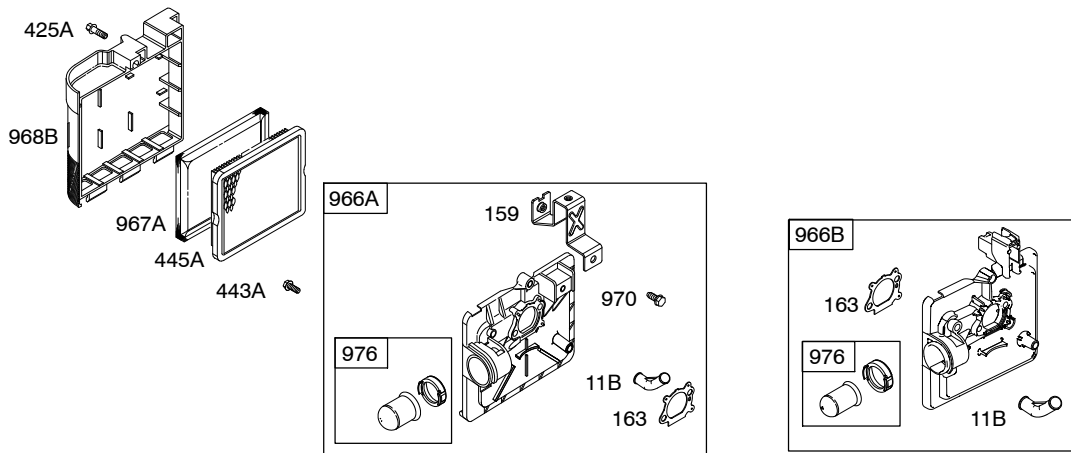
1019 LABEL KIT

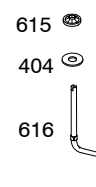
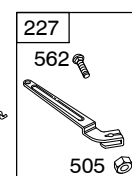
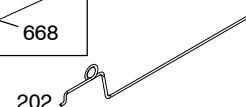
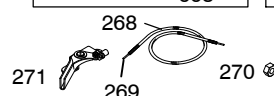
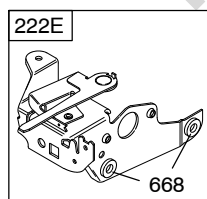
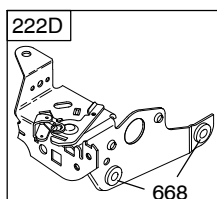
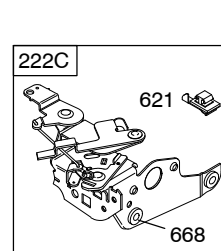
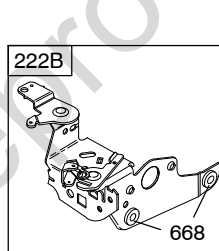
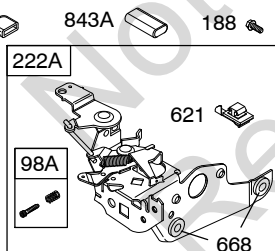
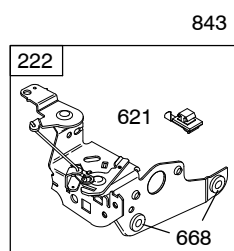
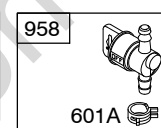
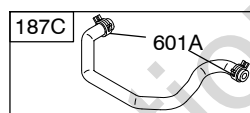
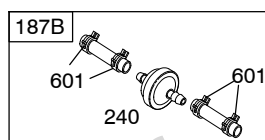
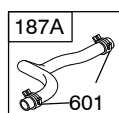
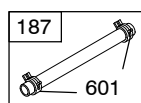
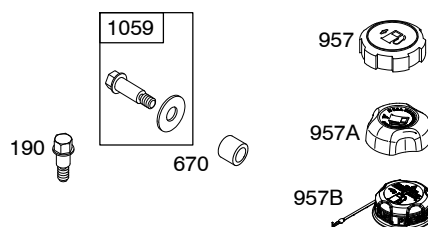
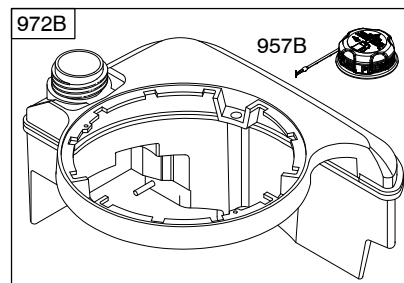
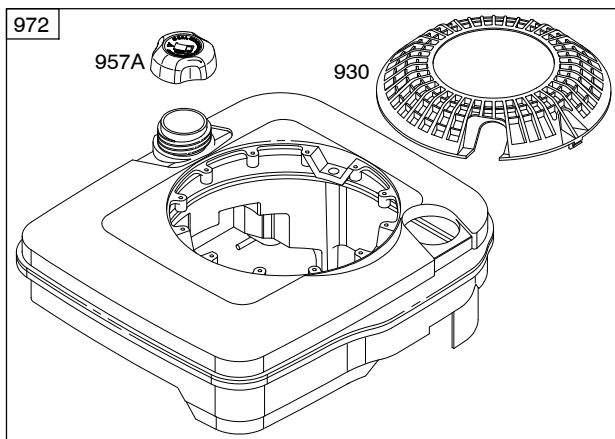


Illustrations cover a range of engines. Parts shown without corresponding text may not be used on your specific engine.
0990-2 Assemblies include all parts shown in frames. **11/30/2011**

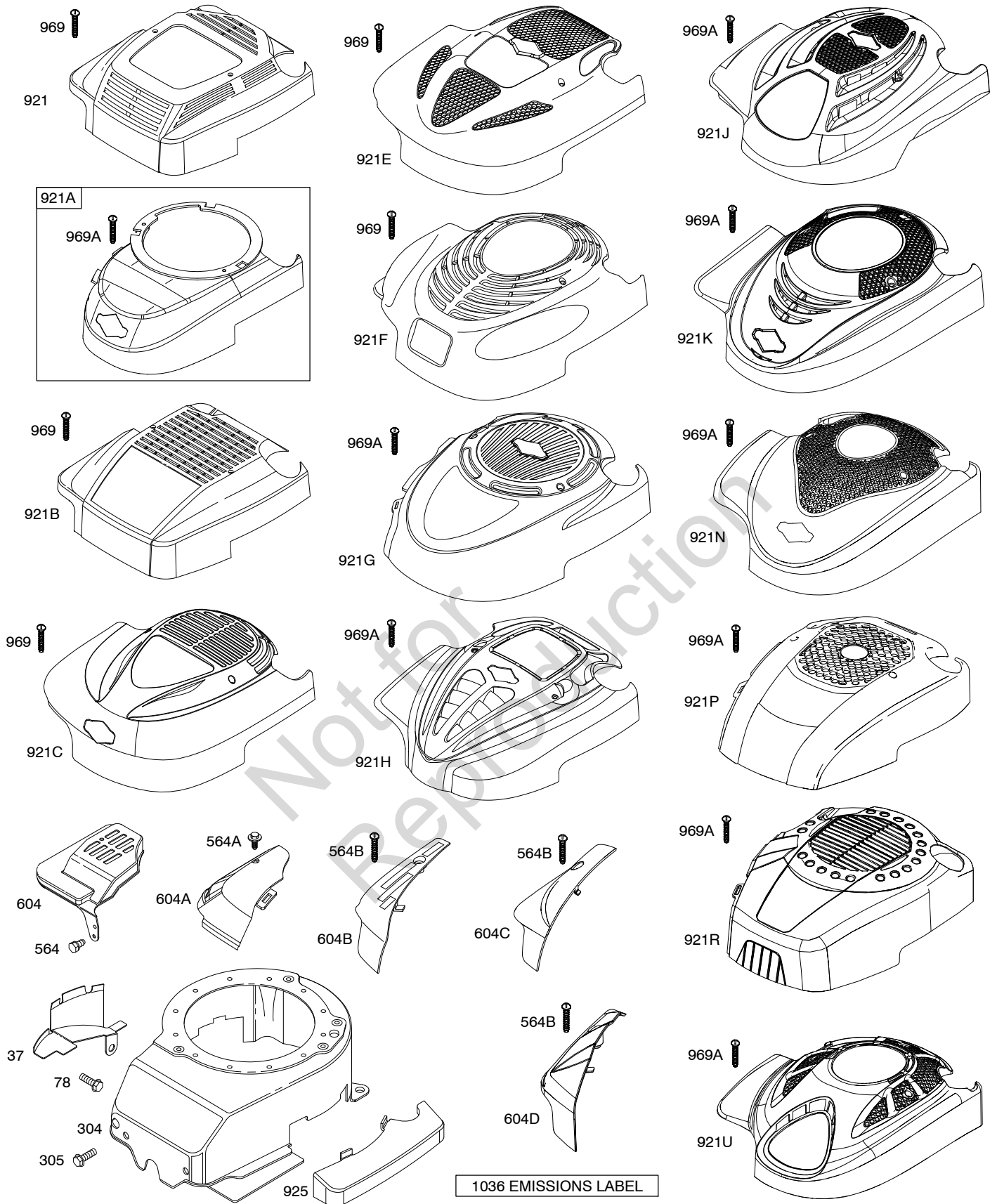


Illustrations cover a range of engines. Parts shown without corresponding text may not be used on your specific engine.

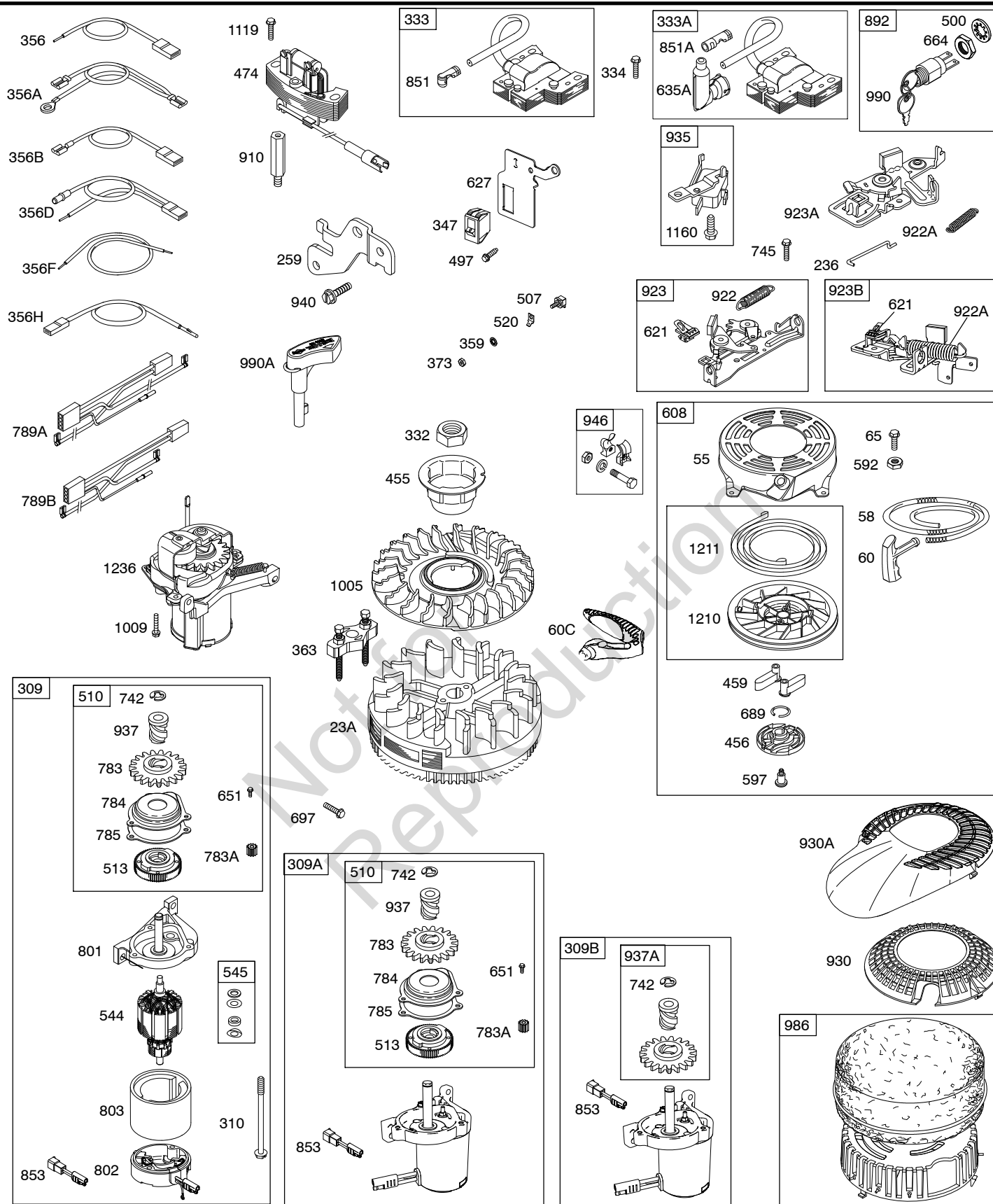




12H800



Illustrations cover a range of engines. Parts shown without corresponding text may not be used on your specific engine.
0990-6 Assemblies include all parts shown in frames. **11/30/2011**



Illustrations cover a range of engines. Parts shown without corresponding text may not be used on your specific engine.

0990-7

Assemblies include all parts shown in frames.

11/30/2011

12H800

REF. NO.	PART NO.	DESCRIPTION	REF. NO.	PART NO.	DESCRIPTION	REF. NO.	PART NO.	DESCRIPTION
1	590401	Cylinder Assembly (Used After Code Date 11063000). ----- Note ----- 697322 Cylinder Assembly (Used Before Code Date 11070100).	5	590411	Head-Cylinder (Used After Code Date 11063000). ----- Note ----- 691160 Head-Cylinder (Used Before Code Date 11070100).	9 ★ 699472		Gasket-Breather (Used After Code Date 11063000). ----- Note ----- 699833 Gasket-Beather (Used Before Code Date 11070100).
2	399269	Kit-Bushing/Seal (Magneto Side)	7 ★ 799875		Gasket-Cylinder Head (Used After Code Date 11063000). ----- Note ----- 692249 Gasket-Cylinder Head (Used Before Code Date 11070100).	10	94650	Screw (Breather Assembly)
3 ★	299819S	Seal-Oil (Magneto Side)	8	590395	Breather Assembly (Used After Code Date 11063000). ----- Note ----- 695250 Beather-Assembly (Used Before Code Date 11070100).	11	691781	Tube-Breather
4	493279	Sump-Engine ----- Note ----- 498983 Sump-Engine Used on Type No(s). 1167, 1715, 1955, 1961, 2320, 2324, 2331, 2367, 2673, 2681, 3182. 696294 Sump-Engine Used on Type No(s). 1375, 1376, 1379, 1717, 1718, 1719, 1730, 1731, 1732, 1735, 1754, 1781, 1792, 1795, 1809, 1811, 1959, 1960, 1996, 2002, 2042, 2043, 2108, 2326, 3181, 3187, 3188.				11B	691923	Tube-Breather
4A	493365	Sump-Engine (Auxilliary PTO)				12	★692232	Gasket-Crankcase
						13	590422	Screw (Cylinder Head) (Used After Code Date 11063000). ----- Note ----- 690912 Screw (Cylinder Head) (Used Before Code Date 11070100).
						15	691680	Plug-Oil Drain (Square Socket)
						15A	691093	Plug-Oil Drain (Hex Socket)

- ★ Included in Engine Gasket Set-Ref. No.358.
● Included in Carburetor Overhaul Kit-Ref. No. 121.

- ◆ Included in Carburetor Gasket Set-Ref. No. 977.
⊘ Included in Valve Gasket Set-Ref. No 1095.

Illustrations cover a range of engines. Parts shown without corresponding text may not be used on your specific engine.

0990-8

Assemblies include all parts shown in frames.

11/30/2011

REF. NO.	PART NO.	DESCRIPTION	REF. NO.	PART NO.	DESCRIPTION	REF. NO.	PART NO.	DESCRIPTION
16	691451	Crankshaft (Used After Code Date 97011200). ----- Note ----- 694442 Crankshaft (Used Before Code Date 97011300). 691450 Crankshaft (Used After Code Date 97011200). Used on Type No(s). 0823,1520,1530,1531, 1532,1533,1567,1705, 1718,1746,1747,1751, 1769,1782,1850,1851, 1905,1906,1907,1910, 1911,1912,1913,1915, 1916,1918,1923,1939, 1940,1950,1951,1952, 1972,1975,1979,1980, 1987,2018,2019,2024, 2029,2150,2313,2375. 2376,2379,2380,2609, 2610,2611,2612,2630, 2631,2649,2667,2677, 2678,2679,2686,3120, 3123,3138,3140,3167, 3176,3184,3187,3188. 694440 Crankshaft (Used Before Code Date 97011300). Used on Type No(s). 0823,1520,1530,1531, 1532,1533,1567,2630, 2631. 692980 Crankshaft (Used After Code Date 97011200). Used on Type No(s). 0658,0660,1570,1758, 1760,1763,2670. 694443 Crankshaft (Used Before Code Date 97011300). Used on Type No(s). 0658,0660,1758.		691452 Crankshaft (Used After Code Date 97011200). Used on Type No(s). 0664,0665,0666,0670, 0671,0672,0680,0840, 0866,0868,0873,0877, 0878,1150,1166,1170, 1171,1320,1326,1332, 1366,1368,1370,1371, 1372,1374,1375,1376, 1377,1378,1379,1544, 1559,1569,1723,1727, 1730,1731,1733,1734, 1736,1737,1738,1739, 1740,1748,1749,1770, 1771,1784,1785,1786, 1790,1794,1795,1801, 1803,1804,1805,1810, 1811,1814,1816,1818, 1821,1823,1825,1826, 1827,1829,1830,1831, 1832,1835,1837,1839, 1844,1845,1846,1847, 1849,1852,1914,1917, 1919,1920,1926,1932, 1935,1936,1941,1942, 1943,1947,1948,1958, 1959,1962,1964,1965, 1966,1967,1970,1973, 1976,1977,1983,1985, 1988,1991,1992,1993, 1994,1995,1996,2001, 2002,2006,2008,2009, 2010,2012,2014,2015, 2017,2023,2027,2028, 2035,2042,2043,2108, 2148,2149,2350,2644, 2669,2676,3130,3132, 3137,3166,3169,3170, 3181,3185,3186,3189, 3313,3314,3315,3320, 3322,3323,3325. 694059 Crankshaft (Used Before Code Date 97011300). Used on Type No(s). 0866,0868,0873,0877, 1166,1170,1332,1366, 1368,1370,1371,1544, 1559,1569,1977.		691455 Crankshaft (Used After Code Date 97011200). Used on Type No(s). 1149,1548,1701,1925, 2312,2313,2314,2315, 2316,2324,2328,2352, 2360,2370,2373,2381, 2383,2384,2394,2395, 2396,3172,3173,3180, 3318,3319. 691375 Crankshaft (Used Before Code Date 97011300). Used on Type No(s). 1149,1548. 692822 Crankshaft Used on Type No(s). 1766. 691482 Crankshaft Used on Type No(s). 1961,2329,2334, 3183. 694079 Crankshaft Used on Type No(s). 1717,1767,1768,1775. 692717 Crankshaft Used on Type No(s). 1955,1986,3178. 694478 Crankshaft Used on Type No(s). 1777. 694849 Crankshaft Used on Type No(s). 1714,1726,2013,2044, 2349,2383,2391,2635, 2683. 694850 Crankshaft Used on Type No(s). 1836,2331,2333,2681. 696009 Crankshaft Used on Type No(s). 1720,1776,1778,1840, 1841,2032,2036,2039, 2040. 696290 Crankshaft Used on Type No(s). 2320. 691454 Crankshaft Used on Type No(s). 1706,2151. 791061 Crankshaft Used on Type No(s). 2037,2038.		

★ Included in Engine Gasket Set-Ref. No.358.

● Included in Carburetor Overhaul Kit-Ref. No. 121.

◆ Included in Carburetor Gasket Set-Ref. No. 977.

⊗ Included in Valve Gasket Set-Ref. No 1095.

Illustrations cover a range of engines. Parts shown without corresponding text may not be used on your specific engine.

12H800

REF. NO.	PART NO.	DESCRIPTION	REF. NO.	PART NO.	DESCRIPTION	REF. NO.	PART NO.	DESCRIPTION
20	★399781S	Seal-Oil (PTO Side)	25	590404	Piston Assembly (Standard) (Used After Code Date 11063000).			590405 Piston Assembly (.020" Oversize) (Used After Code Date 11063000).
20A	★691952	Seal-Oil (PTO Side) (Auxilliary PTO)			----- Note -----			797303 Piston Assembly (.020" Oversize) (Used After Code Date 09041600 and Before Code Date 11070100).
22	691092	Screw (Crankcase Cover/ Sump)			797302 Piston Assembly (Standard) (Used After Code Date 09041600 and Before Code Date 11070100).			795429 Piston Assembly (Standard) (Used After Code Date 07090300 and Before Code Date 09041700).
23A	691987	Flywheel ----- Note ----- 691992 Flywheel Used on Type No(s). 0667, 0878, 1149, 1167, 1369, 1548, 1559, 1569, 1701, 1714, 1715, 1726, 1729, 1750, 1786, 1802, 1807, 1817, 1822, 1824, 1836, 1849, 1919, 1932, 1941, 1942, 1948, 1955, 1961, 1967, 2005, 2009, 2013, 2016, 2037, 2038, 2044, 2320, 2324, 2331, 2333, 2349, 2367, 2383, 2391, 2635, 2669, 2673, 2681, 3133, 3178, 3179, 3183, 3324. 696291 Flywheel Used on Type No(s). 1375, 1376, 1379, 1717, 1718, 1719, 1730, 1731, 1732, 1735, 1754, 1781, 1792, 1795, 1809, 1811, 1959, 1960, 1996, 2001, 2002, 2042, 2043, 2108, 2326, 3181, 3187, 3188.			791097 Piston Assembly (Standard) (Used After Code Date 97011200 and Before Code Date 07090400). 493262 Piston Assembly (Standard) (Used Before Code Date 97011300).			791326 Piston Assembly (.020" Oversize) (Used After Code Date 97011200 and Before Code Date 07090400). 493386 Piston Assembly (.020" Oversize) (Used Before Code Date 97011300). 493387 Piston Assembly (.030" Oversize) (Used Before Code Date 97011300).
24	222698S	Key-Flywheel						

★ Included in Engine Gasket Set-Ref. No.358.

● Included in Carburetor Overhaul Kit-Ref. No. 121.

◆ Included in Carburetor Gasket Set-Ref. No. 977.

⊘ Included in Valve Gasket Set-Ref. No 1095.

Illustrations cover a range of engines. Parts shown without corresponding text may not be used on your specific engine.

0990-10

Assemblies include all parts shown in frames.

11/30/2011

REF. NO.	PART NO.	DESCRIPTION	REF. NO.	PART NO.	DESCRIPTION	REF. NO.	PART NO.	DESCRIPTION
26	590402	Ring Set (Standard) (Used After Code Date 11063000). ----- Note ----- 797304 Ring Set (Standard) (Used After Code Date 09041600 and Before Code Date 11070100). 795431 Ring Set (Standard) (Used After Code Date 07090300 and Before Code Date 09041700). 791098 Ring Set (Standard) (Used After Code Date 04031400 and Before Code Date 07090400). 499425 Ring Set (Standard) (Used After Code Date 97011200 and Before Code Date 04031500). 493261 Ring Set (Standard) (Used Before Code Date 97011300).		590403 Ring Set (.020" Oversize) (Used After Code Date 11063000). 797305 Ring Set (.020" Oversize) (Used After Code Date 09041600 and Before Code Date 11070100). 795432 Ring Set (.020" Oversize) (Used After Code Date 07090300 and Before Code Date 09041700). 791324 Ring Set (.020" Oversize) (Used After Code Date 04102100 and Before Code Date 07090400). 499427 Ring Set (.020" Oversize) (Used After Code Date 97011200 and Before Code Date 04102200). 493389 Ring Set (.020" Oversize) (Used Before Code Date 97011300). 493390 Ring Set (.030" Oversize) (Used Before Code Date 97011300).		27	691588	Lock-Piston Pin (Used After Code Date 09041600). ----- Note ----- 691866 Lock-Piston Pin (Used After Code Date 97011200 and Before Code Date 09041700). 691588 Lock-Piston Pin (Used Before Code Date 97011300). 28
						298909		Pin-Piston (Standard) (Used After Code Date 09041600). ----- Note ----- 499423 Pin-Piston (Standard) (Used After Code Date 97011200 and Before Code Date 09041700). 298909 Pin-Piston (Standard) (Used Before Code Date 97011300). 298908 Pin-Piston (.005" Oversize) (Used Before Code Date 97011300).

★ Included in Engine Gasket Set-Ref. No.358.

● Included in Carburetor Overhaul Kit-Ref. No. 121.

◆ Included in Carburetor Gasket Set-Ref. No. 977.

⊗ Included in Valve Gasket Set-Ref. No 1095.

Illustrations cover a range of engines. Parts shown without corresponding text may not be used on your specific engine.

12H800

REF. NO.	PART NO.	DESCRIPTION	REF. NO.	PART NO.	DESCRIPTION	REF. NO.	PART NO.	DESCRIPTION
29	797306	Rod-Connecting (Standard) (Used After Code Date 09041600). ----- Note ----- 499424 Rod-Connecting (Standard) (Used After Code Date 97011200 and Before Code Date 09041700). 490566 Rod-Connecting (Standard) (Used Before Code Date 97011300).	45	690548	Tappet-Valve	81	691740	Lock-Muffler Screw
			46	691449	Camshaft (Used After Code Date 96060200). ----- Note ----- 492830 Camshaft (Used Before Code Date 96060300).	83	691778	Shaft-Auxiliary Drive Used on Type No(s). 0679, 0823, 1923, 1947, 1949, 1989. ----- Note ----- 690527 Shaft-Auxiliary Drive Used on Type No(s). 0662, 1315, 1538, 1762, 2312, 2313, 2314, 2315, 2316, 2351, 2352, 2360, 2378, 2385, 2394, 3115, 3173, 3319. 690521 Shaft-Auxiliary Drive Used on Type No(s). 1934, 1982, 2330.
32	691664	Screw (Connecting Rod)	46A	691460	Camshaft (Clockwise) (Used After Code Date 96060200). Used on Type No(s). 0823, 1923. ----- Note ----- 493740 Camshaft (Clockwise) (Used Before Code Date 96060300). Used on Type No(s). 0823.	94	●493765	Kit-Idle Mixture
32A	695759	Screw (Connecting Rod) (Used After Code Date 00042200).			691459 Camshaft (Counterclockwise) (Used After Code Date 96060200). Used on Type No(s). 0662, 1315, 1367, 1538, 1762, 1934, 1947, 1949, 1982, 1989, 2312, 2313, 2314, 2315, 2316, 2330, 2351, 2352, 2360, 2378, 2385, 2394, 3115, 3173, 3319.	95	691636	Screw (Throttle Valve)
33	590394	Valve-Exhaust (Used After Code Date 11063000). ----- Note ----- 260651S Valve-Exhaust (Used Before Code Date 11070100).				97	493267	Shaft-Throttle (Metal) ----- Note ----- 696565 Shaft-Throttle (Plastic)
34	590393	Valve-Intake (Used After Code Date 11063000). ----- Note ----- 262652S Valve-Intake (Used Before Code Date 11070100).	50	497465	Manifold-Intake	98	398185	Kit-Idle Speed
35	691270	Spring-Valve (Intake)	51	★272199S	Gasket-Intake	98A	493280	Kit-Idle Speed
36	691270	Spring-Valve (Exhaust)	54	691650	Screw (Intake Manifold)	101	691623	Pin-Shaft
37	694086	Guard-Flywheel	55	691421	Housing-Rewind Starter	104	●691242	Pin-Float Hinge
40	692194	Retainer-Valve	58	280399S	Rope-Starter (Cut To Required Length)	108	691182	Valve-Choke
43	691997	Slinger-Governor/Oil ----- Note ----- 691486 Slinger-Governor/Oil Used on Type No(s). 1167, 1715, 1961, 2334, 2367, 2673, 3183.	60	281434S	Grip-Starter Rope	108A	795935	Valve-Choke (Used After Code Date 08031200). ----- Note ----- 790844 Valve-Choke (Used Before Code Date 08031300).
			60C	799716	Grip-Starter Rope	109	494218	Shaft-Choke
			65	690837	Screw (Rewind Starter)	109A	498593	Shaft-Choke
			78	691108	Screw (Flywheel Guard)	109B	795936	Shaft-Choke (Used After Code Date 08031200). ----- Note ----- 790843 Shaft-Choke (Used Before Code Date 08031300).

★ Included in Engine Gasket Set-Ref. No.358.

● Included in Carburetor Overhaul Kit-Ref. No. 121.

◆ Included in Carburetor Gasket Set-Ref. No. 977.

⊗ Included in Valve Gasket Set-Ref. No 1095.

Illustrations cover a range of engines. Parts shown without corresponding text may not be used on your specific engine.

0990-12

Assemblies include all parts shown in frames.

11/30/2011

REF. NO.	PART NO.	DESCRIPTION	REF. NO.	PART NO.	DESCRIPTION	REF. NO.	PART NO.	DESCRIPTION
117	494870	Jet-Main (Standard) ----- Note ----- 497466 Jet-Main (Standard) Used on Type No(s). 1538. 498977 Jet-Main (Standard) Used on Type No(s). 0664,0665,0666,0667, 0671,0672,1149,1167, 1170,1368,1369,1370, 1373,1374,1377,1548.	121	498260	Kit-Carburetor Overhaul	127	●694468	Plug-Welch
			125	498170	Carburetor (Primer System) ----- Note ----- 498254 Carburetor (Primer System) Used on Type No(s). 1538. 790821 Carburetor (Primer System) Used on Type No(s). 0680,1749,1837,1850, 1917,2035.	130	691203	Valve-Throttle ----- Note ----- 696564 Valve-Throttle (Used With Plastic Throttle Shaft)
117A	498978	Jet-Main (Standard) ----- Note ----- 498981 Jet-Main (Standard) Used on Type No(s). 0678,0679,1726,1746, 1777,1801,1802,1803, 1804,1805,1836,1926, 1942,1955,1986,2331, 2349.	125A	499059	Carburetor (Choke System) Used on Type No(s). 1701,1714,1715,1786, 1932,1961,2013,2044, 2324,2329,2333,2334, 2349,2367,2383,2391, 2635,2673,2681,2683, 3178,3183. ----- Note ----- 498965 Carburetor (Choke System) Used on Type No(s). 0664,0665,0666,0667, 0671,0672,1149,1167, 1170,1368,1369,1370, 1373,1374,1377,1548, 1747. 790978 Carburetor (Choke System) Used on Type No(s). 0678,0679,1746,1801, 1802,1803,1804,1805. 792253 Carburetor (Choke System) (Used After Code Date 05091800). Used on Type No(s). 1726,1777,1836,1926, 1942,1955,1986,2331, 2349. 499059 Carburetor (Choke System) (Used Before Code Date 05070100). Used on Type No(s). 1726,1777,1926,1942, 1955,1986,2331,2349.	133	398187	Float-Carburetor
117B	697355	Jet-Main (Standard)				134	●398188	Kit-Needle/Seat
118	498975	Jet-Main (High Altitude) ----- Note ----- 496495 Jet-Main (High Altitude) Used on Type No(s). 1538. 498978 Jet-Main (High Altitude) Used on Type No(s). 0664,0665,0666,0667, 0671,0672,1149,1167, 1170,1368,1369,1370, 1373,1374,1377,1548.				137	●●796610	Gasket-Float Bowl (1/8" Thick) ----- Note ----- 693981 Gasket-Float Bowl (1/16" Thick)
118A	498975	Jet-Main (High Altitude) ----- Note ----- 494870 Jet-Main (High Altitude) Used on Type No(s). 0678,0679,1726,1746, 1777,1801,1802,1803, 1804,1805,1836,1926, 1942,1955,1986,2331, 2349.	125B	790845	Carburetor (Autochoke System)	146	690979	Key-Timing
118B	692677	Jet-Main (High Altitude)				159	691753	Bracket-Air Cleaner Primer
						163★●●272653		Gasket-Air Cleaner
						187	791766	Line-Fuel (Cut to Required Length)
						187A	791873	Line-Fuel (Molded)
						187B	791891	Line-Fuel (Includes Filter)
						187C	791875	Line-Fuel (Molded)
						188	690877	Screw (Control Bracket)
						190	690940	Screw (Fuel Tank)
						202	691829	Link-Mechanical Governor

★ Included in Engine Gasket Set-Ref. No.358.

● Included in Carburetor Overhaul Kit-Ref. No. 121.

◆ Included in Carburetor Gasket Set-Ref. No. 977.

⊗ Included in Valve Gasket Set-Ref. No 1095.

Illustrations cover a range of engines. Parts shown without corresponding text may not be used on your specific engine.

12H800

REF. NO.	PART NO.	DESCRIPTION	REF. NO.	PART NO.	DESCRIPTION	REF. NO.	PART NO.	DESCRIPTION
209	691864	Spring-Governor Used on Type No(s). 2329. ----- Note ----- 690242 Spring-Governor Used on Type No(s). 1932. 690241 Spring-Governor Used on Type No(s). 1961,3183. 790944 Spring-Governor Used on Type No(s). 1701.	209B	691851	Spring-Governor ----- Note ----- 699056 Spring-Governor Used on Type No(s). 0652,0656,0661,0662, 0822,0824,0828,0837, 0838,0839,0877,1148, 1315,1316,1322,1324, 1325,1332,1378,1534, 1540,1544,1547,1569, 1570,1571,1721,1751, 1752,1754,1755,1756, 1761,1762,1764,1770, 1771,1781,1784,1789, 1901,1922,1928,1934, 1937,1938,1947,1949, 1967,1977,1978,1982, 1983,1987,1989,1990, 2009,2312,2314,2316, 2319,2323,2326,2328, 2330,2348,2351,2371, 2372,2378,2381,2384, 2385,2386,2387,2388, 2389,2390,2394,2395, 2396,2632,2634,2641, 2642,2643,2644,2645, 2646,2647,2648,2649, 2670,2671,2672,2675, 2676,2680,2682,2684, 2685,2686,3115,3116, 3122,3124,3127,3128, 3129,3132,3172,3173, 3174,3180,3306,3307, 3308,3309,3312,3318, 3319,3509,6699. 693187 Spring-Governor Used on Type No(s). 2383,2683. 691291 Spring-Governor Used on Type No(s). 1715,1777,1786,1836, 1942,1955,1986,2320, 2324,2331,2349,2391, 3178. 691290 Spring-Governor Used on Type No(s). 1714,1726,2013,2044, 2367,2673,2635,2681.	691292	Spring-Governor Used on Type No(s). 0658,0840,0866,0868, 0873,0878,1150,1166, 1171,1320,1365,1366, 1367,1371,1372,1375, 1376,1379,1520,1559, 1717,1718,1719,1723, 1724,1731,1732,1733, 1734,1736,1737,1738, 1750,1758,1760,1763, 1764,1765,1766,1767, 1768,1775,1778,1782, 1785,1790,1791,1792, 1795,1808,1809,1810, 1816,1817,1826,1827, 1829,1837,1839,1845, 1849,1850,1852,1905, 1906,1907,1910,1911, 1912,1913,1915,1916, 1917,1918,1925,1926, 1936,1940,1943,1959, 1962,1963,1964,1965, 1966,1968,1970,1972, 1974,1975,1976,1985, 1991,1992,1993,1995, 1996,1999,2001,2002, 2003,2004,2005,2008, 2011,2012,2014,2017, 2018,2019,2024,2027, 2028,2029,2033,2034, 2041,2148,2149,2151, 2352,3125,3130,3137, 3165,3168,3179,3170, 3181,3185,3186,3314, 3315,3316,3317,3320, 3322,3323,3324,3325. 691852 Spring-Governor Used on Type No(s). 0670,0680,1706,1720, 1727,1728,1729,1739, 1748,1749,1807,1811, 1814,1818,1820,1821, 1822,1823,1824,1825, 1830,1831,1832,1833, 1835,1840,1841,1844, 1846,1847,1914,1958, 1960,1994,2006,2010, 2015,2016,2021,2023, 2032,2035,2036,2037, 2038,2039,2040,2042, 2043,2108,2379,2380, 3169,3189.	
209A	690567	Spring-Governor Used on Type No(s). 1167. ----- Note ----- 690568 Spring-Governor Used on Type No(s). 1149,1548. 691835 Spring-Governor Used on Type No(s). 0664,0665,0666,0667, 1170,1368,1369,1370, 1373. 262663 Spring-Governor Used on Type No(s). 0671,0672. 690569 Spring-Governor Used on Type No(s). 1374,1377,1747. 791157 Spring-Governor Used on Type No(s). 1746,1801,1803,1804, 1805. 791315 Spring-Governor Used on Type No(s). 0678, 0679. 792666 Spring-Governor Used on Type No(s). 1802.						

★ Included in Engine Gasket Set-Ref. No.358.

● Included in Carburetor Overhaul Kit-Ref. No. 121.

◆ Included in Carburetor Gasket Set-Ref. No. 977.

⊗ Included in Valve Gasket Set-Ref. No 1095.

Illustrations cover a range of engines. Parts shown without corresponding text may not be used on your specific engine.

0990-14

Assemblies include all parts shown in frames.

11/30/2011

REF. NO.	PART NO.	DESCRIPTION	REF. NO.	PART NO.	DESCRIPTION	REF. NO.	PART NO.	DESCRIPTION
217	690354	Spring-Choke Return	227	690783	Lever-Governor Control	291	790830	Thermostat
222	790143	Bracket-Control (Remote/Manual Friction)(Primer)	231	691636	Screw (Choke Valve)	300	692038	Muffler (Super Lo Tone)
222A	692021	Bracket-Control (Remote, Choke A Matic, Non Compliance)	236	691826	Link-Lockout	----- Note -----		
		----- Note -----	240	298090S	Filter-Fuel		790828	Muffler
		690839 Bracket-Control (Manual Friction) (Choke A Matic) Used on Type No(s). 1149, 1167, 1548.	259	691223	Bracket-Casing Clamp (Control Wire Casing)			Used on Type No(s). 1706, 1738, 1739, 1748, 1750, 1807, 1808, 1816, 1817, 1823, 1824, 1825, 1826, 1827, 1829, 1831, 1835, 1845, 1846, 1847, 1849, 1851, 1963, 1964, 1965, 2011, 2015, 2016, 2017, 2018, 2021, 2022, 2028, 2034, 2041.
		790982 Bracket-Control Used on Type No(s). 0678, 0679, 1746, 1801, 1803, 1804, 1805.	265	690798	Clamp-Casing			792677 Muffler Used on Type No(s). 1844.
222B	693006	Bracket-Control (Fixed Speed Auto Primer Control)	265A	691024	Clamp-Casing	300A	494343S	Muffler (Square Lo Tone)
222C	692150	Bracket-Control (Variable Speed) (5 Position Manual Choke)	265B	692179	Clamp-Casing	300B	497681	Muffler (Catalyst)
222D	692467	Bracket-Control (Fixed Speed)	267	691044	Screw (Casing Clamp)			
		----- Note -----	268	691025	Casing-Control Wire (Cut to Required Length)			
		791128 Bracket-Control Used on Type No(s). 1379, 1738, 1739, 1767, 1781, 1782, 1808, 1809, 1811, 1823, 1825, 1831, 1840, 1841, 1911, 1972, 1975, 2015, 2017, 2018, 2019, 2024, 2032, 2036, 2037, 2038, 2039, 2040, 2108, 2151, 3188.	269	691026	Wire-Control (Cut to Required Length)			
222E	692982	Bracket-Control (Manual Friction, 5 Position Manual Choke)	270	691027	Nut (Control Wire Casing)			
			271	691028	Lever-Control			
			276 ♦	271716	Washer-Sealing			
			287	690940	Screw (Dipstick Tube)			

★ Included in Engine Gasket Set-Ref. No.358.

● Included in Carburetor Overhaul Kit-Ref. No. 121.

♦ Included in Carburetor Gasket Set-Ref. No. 977.

⊗ Included in Valve Gasket Set-Ref. No 1095.

Illustrations cover a range of engines. Parts shown without corresponding text may not be used on your specific engine.

12H800

REF. NO.	PART NO.	DESCRIPTION	REF. NO.	PART NO.	DESCRIPTION	REF. NO.	PART NO.	DESCRIPTION
304	493293	Housing-Blower ----- Note ----- 493294 Housing-Blower Used on Type No(s). 0666, 0667, 0868, 0878, 1149, 1150, 1167, 1171, 1369, 1548, 1559, 1569, 1701, 1705, 1714, 1715, 1726, 1729, 1755, 1766, 1777, 1786, 1802, 1822, 1836, 1839, 1919, 1926, 1932, 1941, 1942, 1948, 1955, 1961, 1967, 1988, 2005, 2009, 2013, 2014, 2027, 2037, 2038, 2044, 2150, 2320, 2324, 2329, 2331, 2333, 2334, 2349, 2350, 2367, 2383, 2391, 2635, 2669, 2673, 2681, 3110, 3120, 3123, 3133, 3138, 3140, 3167, 3176, 3178, 3179, 3183, 3184, 3324. 695892 Housing-Blower Used on Type No(s). 1721, 1724, 1746, 1747, 1784, 1790, 1830, 1837, 1841, 1850, 1852, 1901, 1906, 1907, 1910, 1911, 1912, 1913, 1915, 1972, 1975, 1989, 2019, 2029, 2033, 2320, 2360, 2370, 2384, 2385, 2386, 2389, 2390, 2394, 2395, 2641, 2643, 2646, 2649, 2684, 2685, 2686, 3129, 3180, 3182, 3308, 3309, 3318, 3319, 3509.			696298 Housing-Blower Used on Type No(s). 1375, 1376, 1379, 1717, 1718, 1719, 1730, 1731, 1732, 1735, 1754, 1781, 1792, 1809, 1811, 1959, 1960, 1996, 2001, 2108, 2326, 3181, 3187, 3188. 790826 Housing-Blower Used on Type No(s). 1706, 1829, 1831, 1835, 1846, 1965, 2018, 2022, 2028. 790983 Housing-Blower Used on Type No(s). 1738, 1739, 1808, 1823, 1825, 1826, 1964, 2015, 2017. 791291 Housing-Blower Used on Type No(s). 1750, 1807, 1817, 1824, 1849, 1851, 2016, 2034.			695892 Housing-Blower (Used After Code Date 06081300). Used on Type No(s). 0680, 1737, 1749, 1782, 1818, 1820, 1917, 1966, 2012, 2024, 2035, 2148, 2149, 3170, 3185, 3189. 493293 Housing-Blower (Used Before Code Date 06081400). Used on Type No(s). 0680, 1737, 1749, 1818, 1820, 1917, 1966, 2012, 2148, 2149, 3170, 3185, 3189. 790826 Housing-Blower (Used After Code Date 06081300). Used on Type No(s). 1748, 1816, 1827, 1844, 1845, 1963, 2011, 2012, 2041. 790983 Housing-Blower (Used Before Code Date 06081400). Used on Type No(s). 1748, 1816, 1847, 1963, 2011, 2012.

- ★ Included in Engine Gasket Set-Ref. No.358.
● Included in Carburetor Overhaul Kit-Ref. No. 121.

- ◆ Included in Carburetor Gasket Set-Ref. No. 977.
⊗ Included in Valve Gasket Set-Ref. No 1095.

REF. NO.	PART NO.	DESCRIPTION	REF. NO.	PART NO.	DESCRIPTION	REF. NO.	PART NO.	DESCRIPTION
305	691108	Screw (Blower Housing)	333A	792640	Armature-Magneto (Screw On Spark Plug Boot)	334	691061	Screw (Magneto Armature)
306	690450	Shield-Cylinder				337	799876	Plug-Spark (Used After Code Date 11063000).
306A	790836	Shield-Cylinder			----- Note -----			----- Note -----
307	690345	Screw (Cylinder Shield)			793353 Armature- Magneto			802592S Plug-Spark (Resistor)
309	695550	Motor-Starter (Used Before Code Date 07052900).			(Snap In Spark Plug Boot)			(Used Before Code Date 11070100).
309A	795092	Motor-Starter (Used After Code Date 07052800 and Before Code Date 10112800).			792631 Armature- Magneto			697451 Plug-Spark (EMS)
309B	799045	Motor-Starter (Used After Code Date 10112700).			(Screw On Spark Plug Boot)			(Used Before Code Date 11070100).
310	692327	Bolt (Starter Motor)			Used on Type No(s). 0680,1706,1739,1748, 1749,1750,1807,1808, 1816,1823,1824,1825, 1829,1831,1835,1837, 1917,1963,1965,2011, 2015,2016,2017,2021, 2028.	346	690661	Screw (Spark Arrestor)
332	690662	Nut (Flywheel)			793354 Armature- Magneto	347	691396	Switch-Rocker
333	802574	Armature-Magneto ----- Note ----- 790817 Armature- Magneto			(Snap In Spark Plug Boot)	356	692390	Wire-Stop
		Used on Type No(s). 0680,1738,1739,1748, 1749,1750,1807,1808, 1816,1817,1844,1846, 1847,1917,1963,1964, 1965,2011,2021, 2034.			Used on Type No(s). 0680,1706,1739,1748, 1749,1750,1807,1808, 1816,1823,1824,1825, 1826,1827,1829,1831, 1835,1837,1844,1845, 1846,1847,1849,1850, 1917,1963,1965,2011, 2015,2016,2017,2021, 2028,2035,2041.	356A	690650	Wire-Stop
						356B	693010	Wire-Stop
						356D	496381	Wire-Stop
						356F	494250	Wire-Stop
						356H	690791	Wire-Stop
						358	590508	Gasket Set-Engine (Used After Code Date 11063000).
								----- Note -----
								794307 Gasket Set-Engine (Used Before Code Date 11070100).
						359	691077	Washer (Ground Terminal)
						363	19069	Flywheel Puller

★ Included in Engine Gasket Set-Ref. No.358.

● Included in Carburetor Overhaul Kit-Ref. No. 121.

◆ Included in Carburetor Gasket Set-Ref. No. 977.

⊗ Included in Valve Gasket Set-Ref. No 1095.

Illustrations cover a range of engines. Parts shown without corresponding text may not be used on your specific engine.**0990-17**

Assemblies include all parts shown in frames.

11/30/2011

12H800

REF. NO.	PART NO.	DESCRIPTION	REF. NO.	PART NO.	DESCRIPTION	REF. NO.	PART NO.	DESCRIPTION
365	691688	Screw (Carburetor)	525	495265	Tube-Dipstick	613	691340	Screw (Muffler)
373	691612	Nut (Ground Terminal)	544	690786	Armature-Starter	----- Note -----		
374	691074	Washer (Camshaft)	545	492919	Washer Set (Starter Motor)	790833		Screw (Muffler)
383	89838S	Wrench-Spark Plug	562	92613	Bolt (Governor Control Lever)	Used on Type No(s). 1706, 1738, 1739, 1748, 1750, 1807, 1808, 1816, 1817, 1823, 1824, 1825, 1826, 1827, 1829, 1831, 1835, 1845, 1846, 1847, 1849, 1851, 1963, 1964, 1965, 2011, 2015, 2016, 2017, 2018, 2021, 2022, 2028, 2034, 2041.		
404	690272	Washer (Governor Crank)	564	690664	Screw (Control Cover)	792678		Screw (Muffler)
425A	690670	Screw (Air Cleaner Cover)	----- Note -----			Used on Type No(s). 1844.		
443A	692523	Screw (Air Cleaner Primer Base)	564A	691142	Screw (Control Cover)	613A	691653	Screw (Muffler)
445A	491588S	Filter-Air Cleaner Cartridge	564B	698589	Screw (Control Cover)	613B	691114	Screw (Muffler)
455	791960	Cup-Flywheel	584	697734	Cover-Breather Passage	615	690340	Retainer-Governor Shaft
456	692299	Plate-Pawl Friction	585	★691879	Gasket-Breather Passage	616	698801	Crank-Governor
459	281505S	Plate-Ratchet	592	690800	Nut (Rewind Starter)	617★◆	270344	Seal-O Ring (Intake Manifold)
474	691991	Alternator	597	691696	Screw (Pawl Friction Plate)	621	692310	Switch-Stop
497	690664	Screw (Stop Switch Bracket)	601	791850	Clamp-Hose			
500	691086	Washer (Key Switch)	601A	691038	Clamp-Hose			
505	691251	Nut (Governor Control Lever)	604	691757	Cover-Control			
507	691972	Insulator	604A	691344	Cover-Control			
510	795093	Drive-Starter	604B	790703	Cover-Control			
513	692358	Clutch-Drive	604C	792418	Cover-Control			
520	691084	Terminal-Ground	604D	793770	Cover-Control			
523	499621	Dipstick	608	497680	Starter-Rewind			
524	★692296	Seal-Dipstick Tube						

★ Included in Engine Gasket Set-Ref. No.358.

● Included in Carburetor Overhaul Kit-Ref. No. 121.

◆ Included in Carburetor Gasket Set-Ref. No. 977.

Ø Included in Valve Gasket Set-Ref. No 1095.

Illustrations cover a range of engines. Parts shown without corresponding text may not be used on your specific engine.

0990-18

Assemblies include all parts shown in frames.

11/30/2011

REF. NO.	PART NO.	DESCRIPTION	REF. NO.	PART NO.	DESCRIPTION	REF. NO.	PART NO.	DESCRIPTION
627	692872	Bracket-Stop Switch ----- Note ----- 792565 Bracket-Stop Switch Used on Type No(s). 1701, 1836, 1961.	697	691127	Screw (Drive Cap)	783	691918	Gear-Pinion
633	◆691321	Seal-Choke/Throttle Shaft	715	691147	Screw (Shaft Stop)	783A	691269	Gear-Pinion
633A	◆693867	Seal-Choke/Throttle Shaft	718	690959	Pin-Locating	784	795095	Cover-Starter Gear
635	66538S	Boot-Spark Plug	721	690449	Stop-Shaft	785	692352	Gasket-Starter Cover
635A	792597	Boot-Spark Plug (Screw On Style) ----- Note ----- 793351 Boot-Spark Plug (Snap On Style)	741	797521	Gear-Timing (Metal) (Used After Code Date 08021700). ----- Note ----- 795755 Gear-Timing (Plastic) (Used After Code Date 08021700). 794388 Gear-Timing (Use Without Woodruff Key) (Used After Code Date 07093000 and Before Code Date 08021800). 790345 Gear-Timing (Use Without Woodruff Key) (Used Before Code Date 07100100). 691830 Gear-Timing (Uses Woodruff Key)	789A	691372	Harness-Wiring (Used Before Code Date 00040700). 789B 696547 Harness-Wiring ----- Note ----- 696546 Harness-Wiring Used on Type No(s). 2333, 3138, 3179.
651	691660	Screw (Starter Gear Cover)	742	93941	Retainer-E Ring	801	690782	Cap-Drive
664	691087	Nut (Key Switch)	743	691772	Gear-Drive (Counterclockwise) ----- Note ----- 690516 Gear-Drive (Clockwise) Used on Type No(s). 0823.	802	695267	Cap-End (Used After Code Date 00040600). ----- Note ----- 695975 Cap-End (Used Before Code Date 00040700).
668	★493823	Spacer	745	691648	Screw (Brake)	803	695266	Housing-Starter (Used After Code Date 00040600). ----- Note ----- 695975 Housing-Starter (Used Before Code Date 00040700).
670	692294	Spacer-Fuel Tank				832	590486	Guard-Muffler (Used After Code Date 11063000). ----- Note ----- 499034 Guard-Muffler (Used Before Code Date 11070100).
676	396548	Deflector-Muffler (Louvered)				832A	691424	Guard-Muffler
676A	393756	Deflector-Muffler (Side Out)				832B	497683	Guard-Muffler
676B	397931	Deflector-Muffler (Direct Out)				832E	793568	Guard-Muffler
676C	493871	Deflector-Muffler (Side Out) (Extended)						
677	690661	Screw (Muffler Deflector)						
684	690345	Screw (Breather Passage Cover)						
689	691855	Spring-Friction						
692	690572	Spring-Detent						

★ Included in Engine Gasket Set-Ref. No.358.

● Included in Carburetor Overhaul Kit-Ref. No. 121.

◆ Included in Carburetor Gasket Set-Ref. No. 977.

⊗ Included in Valve Gasket Set-Ref. No 1095.

Illustrations cover a range of engines. Parts shown without corresponding text may not be used on your specific engine.

12H800

REF. NO.	PART NO.	DESCRIPTION	REF. NO.	PART NO.	DESCRIPTION	REF. NO.	PART NO.	DESCRIPTION
836	690664	Screw (Muffler Guard)	869	691155	Seat-Valve (Intake)	910	691094	Stud (Alternator)
836A	690661	Screw (Muffler Guard)	870	690380	Seat-Valve (Exhaust)	921	497233	Cover-Blower Housing
836B	691147	Screw (Muffler Guard)	871	590409	Bushing-Valve Guide (Exhaust) (Used After Code Date 11063000).	921A	695886	Cover-Blower Housing
836C	790745	Screw (Muffler Guard)				921B	692931	Cover-Blower Housing Used on Type No(s). 2012, 2320, 2331, 2626, 2391, 2396.
842	★691031	Seal-O Ring (Dipstick Tube)			----- Note ----- 590409 Bushing-Valve Guide (Intake) (Used After Code Date 11063000).			----- Note ----- 692932 Cover-Blower Housing Used on Type No(s). 2333, 2334.
843	691884	Sleeve-Lever (Speed Control)			262001 Bushing-Valve Guide (Exhaust) (Used Before Code Date 11070100).	921C	695889	Cover-Blower Housing
843A	691895	Sleeve-Lever (Choke)			63709 Bushing-Valve Guide (Intake) (Used Before Code Date 11070100).	921E	696262	Cover-Blower Housing
847	692047	Dipstick/Tube Assembly			883 ★691881 Gasket-Exhaust	921F	697343	Cover-Blower Housing
851	493880S	Terminal-Spark Plug	892	690646	Switch-Key	921G	790701	Cover-Blower Housing
851A	692424	Terminal-Spark Plug				921H	790037	Cover-Blower Housing
853	695268	Adapter-Wire				921J	790036	Cover-Blower Housing
868	590410	Seal-Valve (Used After Code Date 11063000). ----- Note ----- 697338 Seal-Valve (Used Before Code Date 11070100).				921K	699984	Cover-Blower Housing
						921N	792675	Cover-Blower Housing
						921P	792687	Cover-Blower Housing
						921R	793771	Cover-Blower Housing
						921U	794355	Cover-Blower Housing
						922	691831	Spring-Brake
						922A	692135	Spring-Brake

★ Included in Engine Gasket Set-Ref. No.358.

● Included in Carburetor Overhaul Kit-Ref. No. 121.

◆ Included in Carburetor Gasket Set-Ref. No. 977.

⊘ Included in Valve Gasket Set-Ref. No 1095.

Illustrations cover a range of engines. Parts shown without corresponding text may not be used on your specific engine.

0990-20

Assemblies include all parts shown in frames.

11/30/2011

REF. NO.	PART NO.	DESCRIPTION	REF. NO.	PART NO.	DESCRIPTION	REF. NO.	PART NO.	DESCRIPTION
923	691994	Brake	925	795403	Cover-Linkage (Used After Code Date 07072200).	958	698183	Valve-Fuel Shut Off (Plastic)
923A	695891	Brake				966A	496116	Base-Air Cleaner Primer
		----- Note -----				966B	792040	Base-Air Cleaner Primer
		695891 Brake (Used Before Code Date 08050100). Used on Type No(s). 0680, 1700, 1706, 1721, 1724, 1737, 1746, 1747, 1748, 1749, 1753, 1782, 1816, 1818, 1820, 1827, 1829, 1830, 1831, 1835, 1837, 1841, 1844, 1845, 1846, 1850, 1852, 1906, 1907, 1908, 1910, 1911, 1912, 1913, 1915, 1917, 1930, 1963, 1965, 1966, 1972, 1975, 2011, 2012, 2018, 2019, 2021, 2022, 2024, 2028, 2029, 2033, 2035, 2041, 2148, 2149, 2308, 2639, 3170, 3185, 3189, 3509.			----- Note -----	967A	493537S	Filter-Pre Cleaner
			930	691919	Guard-Rewind (Round)	968B	692298	Cover-Air Cleaner
			930A	691345	Guard-Rewind (Teardrop)	969	690700	Screw (Blower Housing Cover)
			935	499421	Switch-Interlock (Used Before Code Date 08050100).	969A	691138	Screw (Blower Housing Cover)
			937	691325	Spline-Starter	970	691669	Screw (Air Cleaner Primer Bracket)
			937A	799420	Spline-Starter	972	699392	Tank-Fuel (Plastic)
			940	690664	Screw (Casing Clamp Bracket)	972B	699374	Tank-Fuel (Plastic)
			946	691738	Stop-Rope			----- Note -----
			957	397974S	Cap-Fuel Tank (Plastic)			699387 Tank-Fuel (Plastic)
					----- Note -----			Used on Type No(s). 1375, 1376, 1379, 1717, 1718, 1719, 1730, 1731, 1732, 1735, 1754, 1781, 1792, 1795, 1959, 1960, 1996, 2001, 2002, 2042, 2043, 2108, 2326, 3181, 3187, 3188.
					692662 Cap-Fuel Tank (Plastic) Used on Type No(s). 2384, 3312, 3318, 3319.			
923B	796136	Brake (Used After Code Date 08043000). Used on Type No(s). 0680, 1700, 1706, 1721, 1724, 1737, 1746, 1747, 1748, 1749, 1753, 1782, 1816, 1818, 1820, 1827, 1829, 1830, 1831, 1835, 1837, 1841, 1844, 1845, 1846, 1850, 1852, 1906, 1907, 1908, 1910, 1911, 1912, 1913, 1915, 1917, 1930, 1963, 1965, 1966, 1972, 1975, 2011, 2012, 2018, 2019, 2021, 2022, 2024, 2028, 2029, 2033, 2035, 2041, 2148, 2149, 2308, 2639, 3170, 3185, 3189, 3509.	957A	692046	Cap-Fuel Tank (Plastic)			
			957B	699985	Cap-Fuel Tank (Plastic)			

★ Included in Engine Gasket Set-Ref. No.358.

● Included in Carburetor Overhaul Kit-Ref. No. 121.

◆ Included in Carburetor Gasket Set-Ref. No. 977.

⊘ Included in Valve Gasket Set-Ref. No 1095.

Illustrations cover a range of engines. Parts shown without corresponding text may not be used on your specific engine.**0990-21**

Assemblies include all parts shown in frames.

11/30/2011

12H800

REF. NO.	PART NO.	DESCRIPTION	REF. NO.	PART NO.	DESCRIPTION	REF. NO.	PART NO.	DESCRIPTION
975	493640	Bowl-Float	1059	692311	Kit-Screw/Washer	1211	498144	Pulley/Spring Assembly
976	694395	Primer-Carburetor			----- Note -----			(Spring)
977	498261	Gasket Set-Carburetor			696293 Kit-Screw/Washer	1236	695959	Starter-Mechanical (Touch N Mow)
986	693514	Filter-Debris Foam			(Touch N Mow)			(Do Not Service Individual Parts, Only As A Whole)
990	691959	Key Set			Gasket Set-Valve (Used After Code Date 11063000).			----- Note -----
990A	695951	Key Set (Touch N Mow)	1095	590507				699914 Starter-Mechanical (Touch N Mow)
								(Do Not Service Individual Parts, Only As A Whole)
994	398067	Arrestor-Spark			----- Note -----			
1005	691346	Fan-Flywheel			498528 Gasket Set-Valve (Used Before Code Date 11070100).			1319 794467 Label-Warning
1009	696255	Screw (Starter Motor)						1330 270962 Manual-Repair
								1386 790848 Vane-Air (Autochoke System)
1019	494256	Kit-Label						1387 790849 Spring-Air Vane
		----- Note -----						1388 790850 Screw (Air Vane) (Autochoke System)
		790231 Kit-Label (Touch N Mow)	1102	691266	Pilot-Guide Used on Type No(s). 1167, 1715, 2367, 2673.			
1036		Label-Emissions (Available From A Briggs & Statton Authorized Dealer)			----- Note -----			
					691255 Pilot-Guide Used on Type No(s). 1955, 1961, 2681, 3183.			
1058	380567	Operator's Manual (Used After Code Date 11063000).						
		----- Note -----						
		277039 Operator's Manual (Used Before Code Date 11070100).	1119	691648	Screw (Alternator)			
		277101 Operator's Manual (Touch N Mow)	1160	690345	Screw (Interlock Switch)			
			1210	498144	Pulley/Spring Assembly (Pulley)			

★ Included in Engine Gasket Set-Ref. No.358.

● Included in Carburetor Overhaul Kit-Ref. No. 121.

◆ Included in Carburetor Gasket Set-Ref. No. 977.

⊘ Included in Valve Gasket Set-Ref. No 1095.

Illustrations cover a range of engines. Parts shown without corresponding text may not be used on your specific engine.

0990-22

Assemblies include all parts shown in frames.

11/30/2011

Not for
Reproduction

